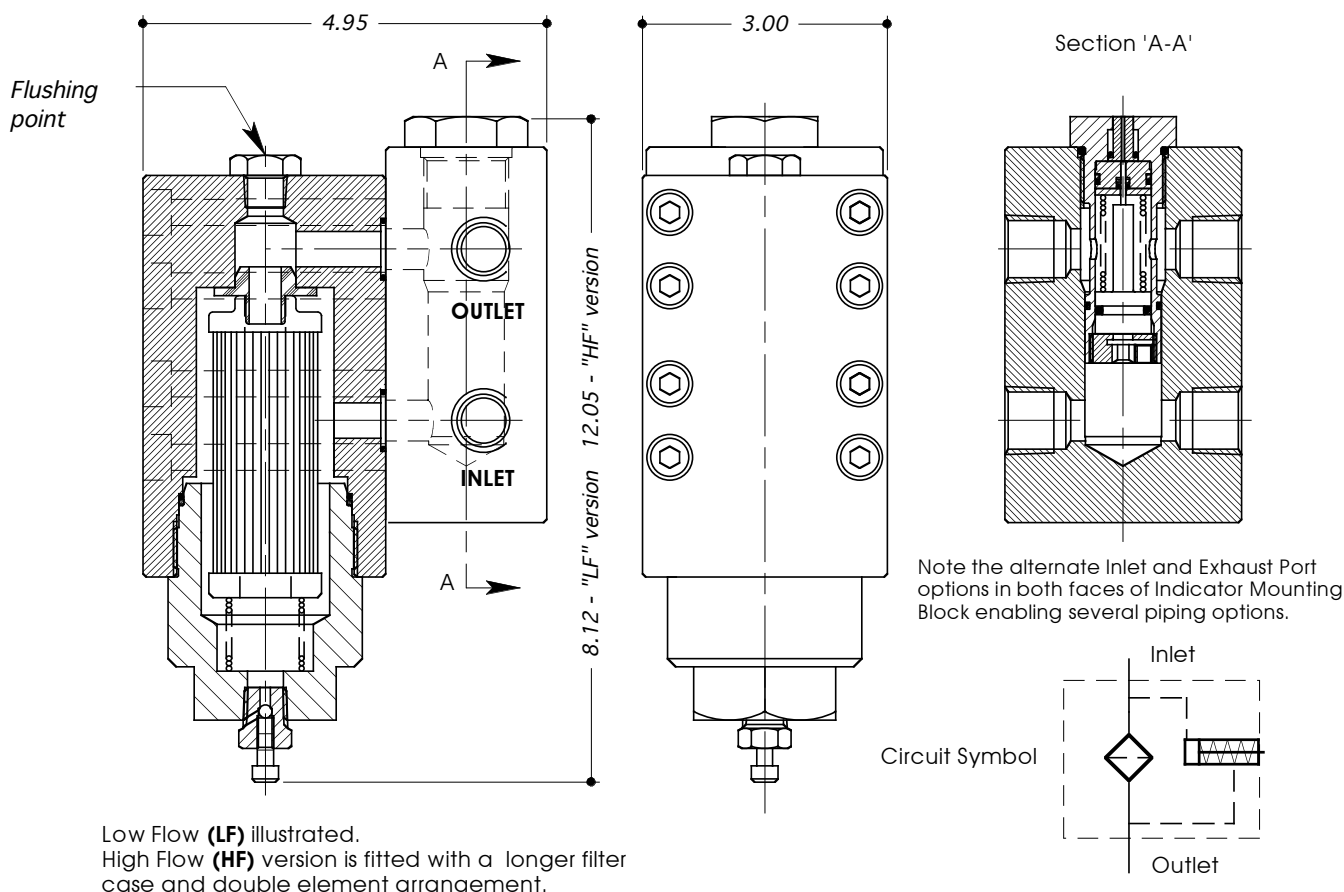


SIMPLEX FILTER TYPE: SF50



Valves Ltd

- STAINLESS STEEL (316 / 1.4404)
- SUITABLE FOR LIQUID USE.
- "POP-OUT" FILTER CLOGGING INDICATOR.
- ALL DIMENSIONS IN INCHES.



TECHNICAL SPECIFICATION		ORDERING EXAMPLE
Filter Type:	SF50	SF50
Porting / Connection Options:	P = BSP (Parallel) N = NPT (Taper)	N
Micron Rating:	3, 5, 10, 20, 50 M (Micron)	20M
Indicator Type:	"DP" = Visual 'pop-out' "BP" = Visual 'pop-out' with by-pass	DP
Differential Press (DP) Bar:	3, 5 or 7	7
Flow Rate:	30 L/Min (Standard) ("HF" High Flow = 50 L/Min)	—
Max. Working Pressure: (Liquid)	6,000 psi	6K
Port Size:	1/2"	
Cv Value: (See Note)	3.02	
Dry Weight: (kg)	8.6	
Seal Material:	Viton (other materials available by request)	
Working Temperature Range:	-10°C to +110°C	

Cv Value Note: The figures quoted are for the basic assembly without elements fitted. For total loss including elements forward details of Specific Gravity, Viscosity and Flow Rate to our Technical Department.